

DOUBLE-WALLED HOT WATER GENERATOR - GEC (DP)

Powerful and instantly cost-effective

40 to 1500kW

Gas burner Instantaneous

Energy-efficient

Fluid heating

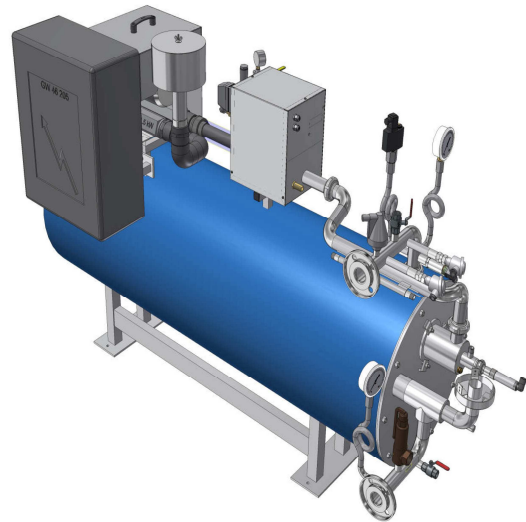
Closed circuit Easy integration

Multi fluids Fast response

Compact Versatile

Energy self-sufficient

Clean in place



Winning features:

- ✓ **Energy savings** from 30% to 50%
Reduced CO₂ emissions
- ✓ Efficiency from **95%/NCV up to 105%/NCV**
- ✓ Simplified set-up
- ✓ **Standalone**, programmable clock start (optional)
- ✓ Compatible with cooling water circuits **without the risk of causing negative pressure build-up**
- ✓ Superheated water production **possible (optional)**
- ✓ Shorter water circuit, **smaller energy loss**
- ✓ **Biogas-compatible**
- ✓ Not subject to the European Pressure Equipment Directive
- ✓ One **hot water equipment** for **several fluids**

* : Depends on the features of your installation and operating methods



Applications

Food industry

Sterilisation / autoclave coupling
CIP station

Breweries CIP station
Stirring / mashing

Chemistry / cosmetic industries
CIP station

Pharmaceutics
CIP station

Textiles Heating autoclave dye baths

References

