

HOT WATER GENERATOR – GEC/RIO(H)

Powerful and instantly cost-effective

40 to 1500kW

Gas burner Instantaneous

Energy-efficient

Hot water production

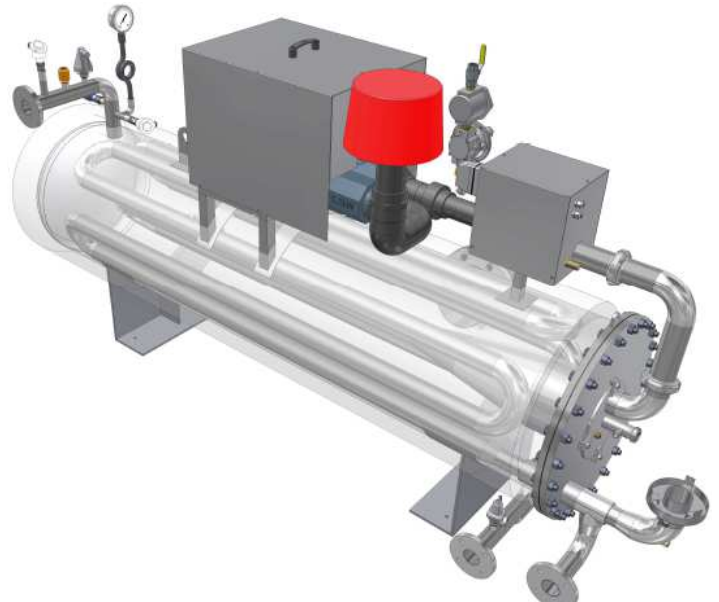
Open circuit Easy integration

Fast response

Continuous draw

Compact Versatile

Energy self-sufficient



Winning features:

- ✓ **Energy savings** up to 30%
Reduced CO₂ emissions
 - ✓ Efficiency from **95%/NCV up to 105/NCV***
 - ✓ X-ray quality, **plasma-welded tank**
 - ✓ **Solar thermal** coupling possible
 - ✓ **Standalone**, programmable clock start (optional)
 - ✓ Shorter water circuit, **smaller energy loss**, smaller **expansion vessel**
 - ✓ Small footprint making for reduced installation costs
 - ✓ **Biogas-compatible**
 - ✓ Not subject to the European Pressure Equipment Directive
- ✓ Food industry: **Meets extensive variations** in draw according to product seasonality

* : Depends on the features of your installation and operating methods



Food industry

Food industry

Domestic hot water production
 Process hot water production
 Vegetable blanching
 Carcass watering

Textiles

Textiles

Process hot water production
 Wool washing

Chemistry / cosmetic industries

Chemistry / cosmetic industries

Process hot water production
 Decoction baths

References

