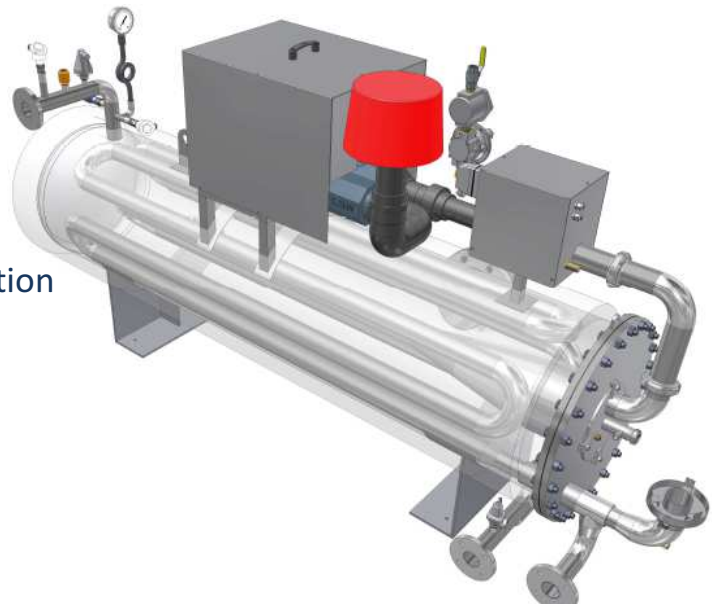


HOT WATER GENERATOR – GEC/RIO(6)

Powerful and instantly cost-effective

40 to 1500kW

Gas burner
Instantaneous
Energy-efficient
Fluid heating
Closed circuit Easy integration
Fast response
Time at temperature
Compact Versatile
Energy self-sufficient



Winning features:

- ✓ **Energy savings** up to 30%
Reduced CO₂ emissions
 - ✓ Efficiency from **95%/NCV up to 105%/NCV***
 - ✓ X-ray quality, **plasma-welded tank**
 - ✓ **Compatible** with cooling water circuits **without the risk** of causing negative pressure build-up
 - ✓ **Solar thermal** coupling possible
 - ✓ **Biogas-compatible**
 - ✓ **Efficiently** handles extensive, variable power demand
 - ✓ Standalone, programmable clock start (optional)
 - ✓ Shorter water circuit, **smaller energy loss**
 - ✓ Not subject to the European Pressure Equipment Directive
- ✓ **Food industry:** Slow cooking **without risk of damage** to product or overheating

* : Depends on the features of your installation and operating methods



Food industry

Food industry

- Pasteurisation
- Sterilisation
- Wax basin
- Water bath cooking

Breweries

Breweries

- Malting / stirring
- In-line pasteurisation
- Bottle pasteurisation

Surface treatment

Surface treatment

- Acid bath heating through welded plate heat exchangers
- Neutraliser bath heating through welded plate heat exchangers

References

